

ISRAEL AgriFood-Tech Valley

CLUSTER MANAGEMENT



About us

The Galilee region, which abounds in rich and diverse micro-climates and soils, extensive agriculture, advanced academia and research infrastructure, is in a unique position to be a global center for technological innovation in the agriculture and food space.

During the past years, the academic institutes and the economic regional leadership, with the support of the Israeli government and the Ministry of Economy, has been leading one of the biggest and most promising economic efforts for turning the Galilee region into an economic center of excellence in the field of innovative food and smart agriculture.

Diverse stakeholders from academia, industry and the social sector came together, driven by a desire to strengthen and promote an entrepreneurial and investor friendly AgriFood-Tech ecosystem in the Galilee.



The Galilee region will become an international center of excellence in the field of AgriFood-Tech; attracting researchers, entrepreneurs and investors while creating value for the region and the country in deep collaboration with the existing food and agricultural industry



To accelerate industry and agriculture growth in the Galilee, partners from the business, public and social sectors collaborated on a single initiative. We do this by connecting organizations, investors, industrialists, and entrepreneurs to local assets and existing infrastructures:



Support programs for startups



Researchers and applied research groups



Startup companies and veteran industry



Farmers and experimental farms



Supporting municipal authorities



Community organizations to support human capital



Government and private funding entities



The Galilee AgriFood-Tech Ecosystem currently includes:

82



Start-up companies,
60 in the field of
AgriFood-Tech

National Food
Institute

4

Research & Academy
institutes: Tel-Hai,
MIGAL , Shamir,
Bar-Ilan

120

Over 120 PhDs and
researchers in favor
of applied research
collaborations

80



Over \$80 million
investments in
startup companies

Facility for
agriculture and
industry integration
5 industrial zones

1,300

Academy graduates - local
human capital available
to integrate into regional
employment



What do we offer?

If you are an investor, entrepreneur or industrialist, we can introduce you to the heart of the new economic revolution in the Galilee. **We've got the tools and the right connections.**



Investors

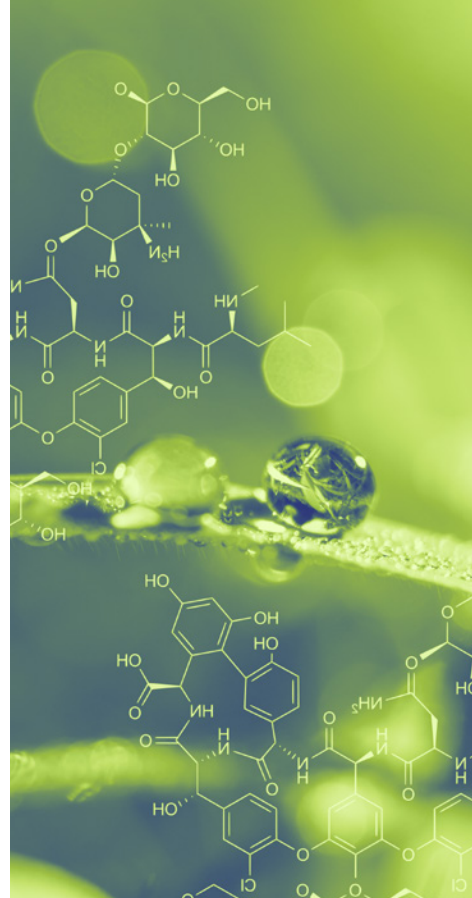
The AgriFood-Tech Valley supports you in the ecosystem:

- 🌿 Agriculture, industry, academia and development
- 🌿 Monitoring startups
- 🌿 Active deal flow
- 🌿 Access to startup incubators and communities



Industrialists

- 🌿 All-around support in transferring activity to the ecosystem
- 🌿 Assistance in locating a prime location
- 🌿 Subsidized land and 90% of development costs
- 🌿 Rapid municipal support with permitting approvals
- 🌿 30% grant for capital investments
- 🌿 Support for relocation programs
- 🌿 Assistance in locating suitable human capital





Entrepreneurs

Support programs and incubators

- 🌿 The Studio, Margalit Startup City GALIL, in partnership with JVP VC
- 🌿 Fresh Start FoodTech Incubator backed by Tnuva, Tempo Beverages, OurCrowd, Finistere Ventures, and the Israel Innovation Authority
- 🌿 Galil Ofek Innovation
- 🌿 Access to international food industry experts and venture capitalists

Co-working spaces and communities

- 🌿 Margalit Startup City GALIL
- 🌿 HubBazelet: 300 workspaces in two locations, Waset Center and Bnei Yehuda
- 🌿 An agriculture-focused work complex near farmlands (under construction)
- 🌿 A work complex dealing with a product's technological transition to production (under construction)
- 🌿 HeightsTech, Golan's high-tech community
- 🌿 GALILADIES
- 🌿 The Nortech Platform

Agriculture, Research and Academia

- 🌿 Natural live lab available for large scale R&D
- 🌿 Diverse agricultural lands in the area
- 🌿 Connection to 50 research groups
- 🌿 Connection to the laboratories at Migal, an internationally-recognized and multi-disciplinary applied research institute
- 🌿 R&D in experimental farms in a diverse geographical area
- 🌿 National Food Institute
- 🌿 Support for innovative development processes
- 🌿 Connection to academia - Tel Hai College
- 🌿 Tel Hai Innovation Center
- 🌿 A program promoting agricultural innovation
- 🌿 Kinneret Innovation Center

Our Partnership

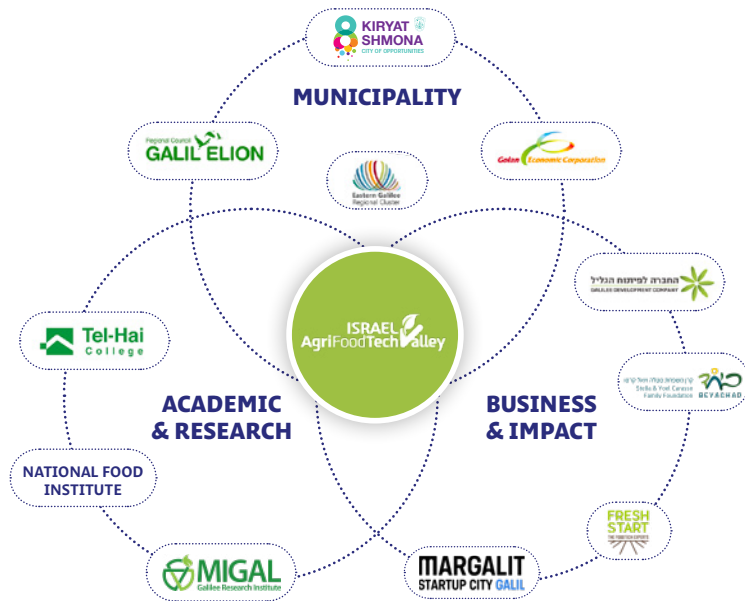
What makes us unique?

Locality Focusing on local resources, expertise, and knowledge, cultivates and harnesses the unique strengths of the region

Diverse We are a diverse group of partners encompassing research and academia, municipality, regional government, impact investors and the business sector.

Bottom-Up Founded and working bottom-up helps us identify and address issues and challenges at early stages, saving time and resources.

Voluntary Our voluntary-based participation promotes self-motivation and trust between stakeholders in the cluster.



Our Partners - Triple Helix

Our team

David Zigdon

CEO
MIGAL - Galilee Research
Institute
Chairman
Israel AgriFood-Tech Valley

Sharon Engel Adam

General Manager
Israel AgriFood-Tech Valley

Atar Razy-Oren

CEO
Beyachad Foundation

Yarden Erlich

Head of Division of Industry,
Business and Tourism
Kiryat Shmona Municipality

Ronit Badler

Chief of Business Development
Galilee Development Company

Nitzan Sela Bloom

Regional Economic Development
Eastern Galilee Cluster

Ori Ben-Herzel

VP of Value Creation
MIGAL Galilee Research Institute

Dr. Ofir Benjamin

Senior lecturer and researcher &
Future CTO National Food Institute
Food Science Department,
Tel Hai College

Mira Hershkovits

Director of Entrepreneurship and
Industrial Relations
Tel-Hai College

Nisan Zeevi

CEO
Margalit Startup City GALIL

Noga Sela Shalev

CEO
Fresh Start FoodTech Incubator IL

Lior Rochman

CEO
Golan Economic Corporation

Yifat Shraiber Levental

Manager
Economic Business Dev. and Tourism
Upper Galilee Regional Council

Contact us:

Sharon Engel Adam | sharonea@telhai.ac.il | +972-54-9222838

www.foodtechvalley.org

